

GUARD BOOTHS



MULTIPLE SIZES AVAILABLE

4' x 8'

- Houses one security person and is equipped with a standard 20-inch shelf for AVB controls and monitoring displays

6' x 8'

- Equipped for one or two security personnel with space for multiple controls and displays

10' x 10'

- Sized to function as an electrical shelter or guard booth. Accommodates multiple security personnel with shelving options for multiple controls and displays

10' x 12'

- Equipped for multiple security personnel, lavatory options, and multiple display and shelving options are available

Short Lead Times Available

FutureNet Security can deliver your booth in as little as six to eight weeks depending on your facility's needs and the condition of the areas in which the security booth will be placed.

FutureNet Security Turnkey Installations Can Include:

- Excavation and custom concrete pad foundation
- Terminating and installing all control and display systems
- Providing and installing conduit and wiring for connection to power supply
- Shipment and placement of the security booth

OVERVIEW

- Preassembled, designed, and structurally engineered. 14-gauge steel mechanical square tubing framework meets ASTM-A500 standards.
- Prefabricated as specified by the UFGS Specifications, section 13.34.21.
- 16-gauge interior panels, fabricated and insulated to a minimum R-12. All joints pressure sealed against any weather intrusion.
- Top-hung, horizontal sliding doors with an extruded aluminum frame. Doors come with heavy duty hardware, keyed lock and weather stripping.
- Non-slip flooring for safety. Anti-fatigue mats can be provided upon request.
- Rust inhibitive high build epoxy primer and urethane finish coat. Custom designs and colors are available.
- 1500-4400 watt, 110/220 volt HVAC with fan and internal wall mounted thermostat control. Ceiling mounted unit optional. Bullet resistant shroud covering HVAC system available for ballistic rated models.
- Four 20 amp, 120 volt, GFI duplex wall outlets.
- Pre-wired electrical power service in accordance with U.L. and NEC standards for quick and easy installation on the project site. 125 amp, 120/240 volt, three wire, single phase, 8-16 circuit breaker panel.

BALLISTIC RATED

All exterior window frames are hot-rolled formed, angle framed with concealed zinc-plated exterior fasteners and glazed with tinted laminated safety glass to reduce specular transmission.

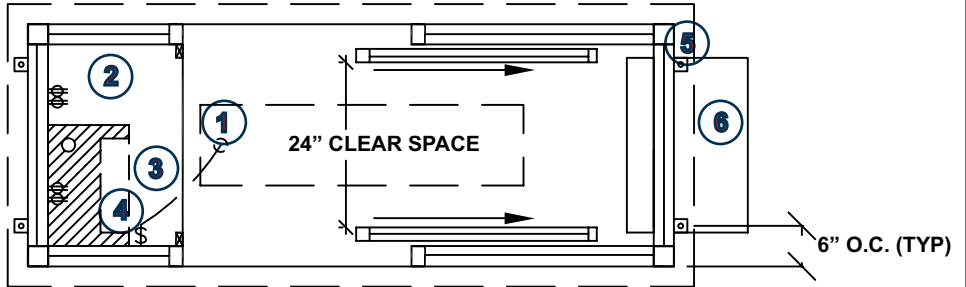
Walls, ceilings, windows, and doors are manufactured with material that meets or exceeds **Bullet Resistant Level I, II, III, or IV** as identified by UL Standard 752. This range covers a 9mm handgun up to a .30 caliber rifle.

GUARD BOOTHS

TYPICAL 4'X8' ACP GUARD BOOTHS

Note: This is a general specification

- 3" Overhang exterior membrane roof
- 90" Interior height
- Insulation: walls R-10 and ceiling R-19
- Aluminum tread plate floor
- Building painted custom colors
- UL certification and compliance with the NEC
- Bullet resistant UL 752 Level III construction:
 - Walls and A/C shroud
 - 3/16" Ex1050 steel sheet
 - Glazing - 1 1/4" tinted polycarbonate
 - Door - (2) steel doors with 17" x 29" vision lite, and hookbolt deadlock



1) One two-tube 40 watt, 120 volt fluorescent light fixtures mounted in back-lighted prismatic tile ceiling, operated by a single pole wall switch.

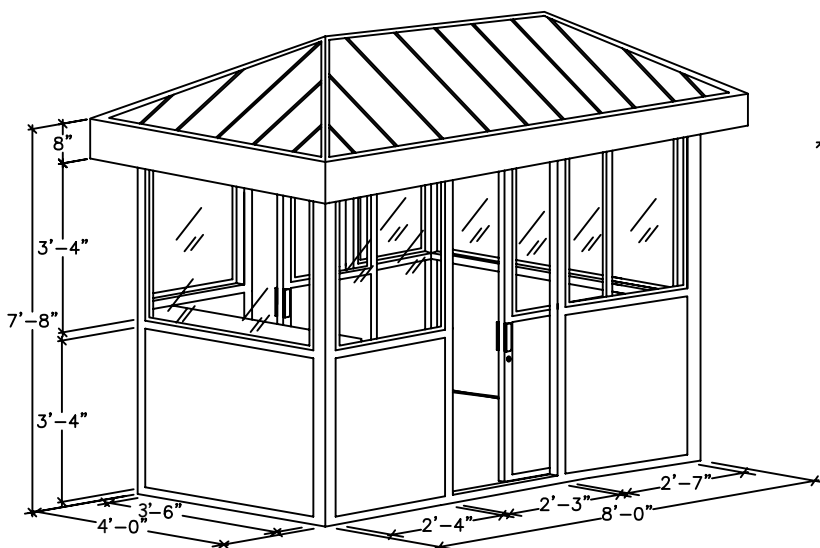
2) Four 20 amp, 120 volt duplex wall outlets to be mounted under front counter as specified.

3) One heavy duty 14 gauge stainless steel front shelf, 20" deep with two 2" diameter access ports for cables. Shelf to be located 34" A.F.F.

4) Prewired 125 amp, max 120/240 volt, 3-wire, 8/16 panel, single phase to be flush mounted in control cabinet.

5) Four anchor brackets, 3/4" dia. holes.

6) One wall mounted HVAC unit 230/208V heating 11,600/9,500 btu, cooling 11,600/11,400 btu with integral thermostat control and bullet resistant shroud.



FRONT ELEVATION

